



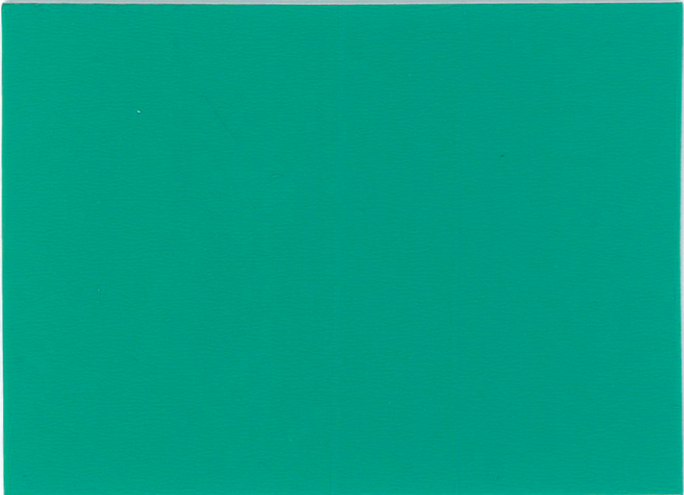
伊达®
YIDA

工业级专用地板

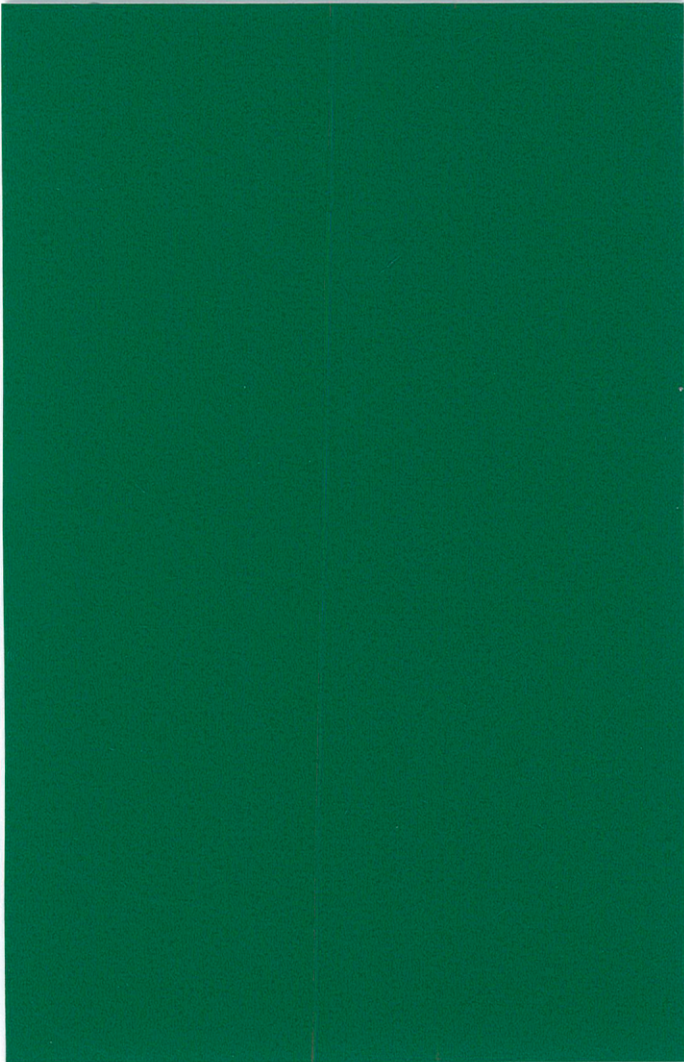
INDUSTRIAL GRADE DEDICATED FLOORING

Widely used in large factories, workshops, factories, laboratories, various 4S repair shops, dust-free workshops, clean workshops, large storage centers, distribution centers, museums, parking lots, cinemas, airports, stations, and other places

Product thickness 产品厚度	1.2/1.4/1.6mm
Wide in width 宽幅	2m
Length 长度	20m



YD-1008



YD-1001

工业级专用地板

INDUSTRIAL GRADE DEDICATED FLOORING

一种为轻工业环境设计的以高分子聚合物为主要材料的卷材地板,是以多种高分子聚合物材料通过特殊工艺形成的共混物材料具有耐磨、耐压、降噪、抗渗、防腐、防火、抗菌等符合轻工业地面使用环境的理化性,解决了传统工业地坪在应用和使用过程中给生产环境带来的困扰,节省了在改造和维护过程中的时间成本与费用

A coiled material floor designed for light industrial environments, mainly made of polymer materials, is a blend of various polymer materials formed through special processes. The material has physical and chemical properties such as wear resistance, pressure resistance, noise reduction, impermeability, anti-corrosion, fire prevention, and antibacterial, which are in line with the use environment of light industrial floors. It solves the problems that traditional industrial floors bring to the production environment during application and use, Saves time, cost, and expenses during renovation and maintenance processes





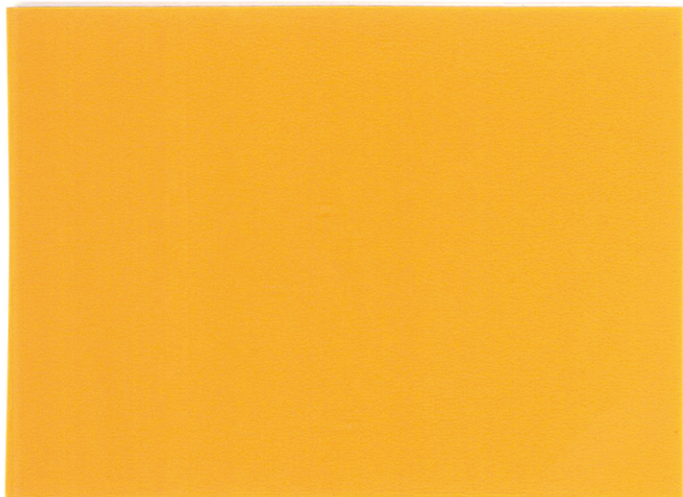
更环保：
环保指标领先国家行业标准



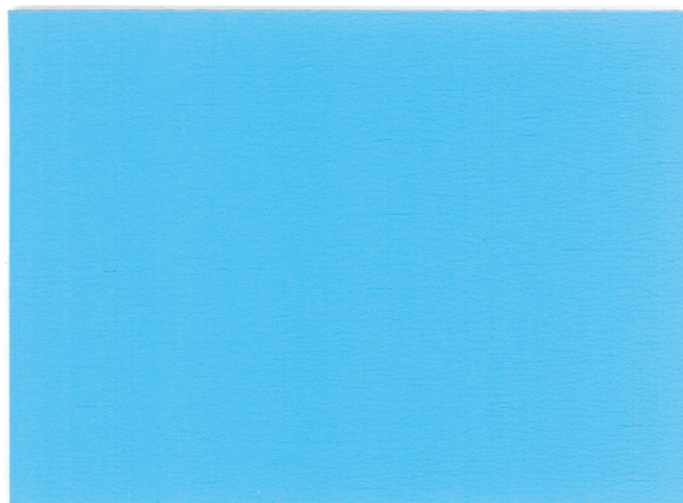
更省心：
全新抗碘酊处理、如荷叶般
遇水珠、为您省时省力省心



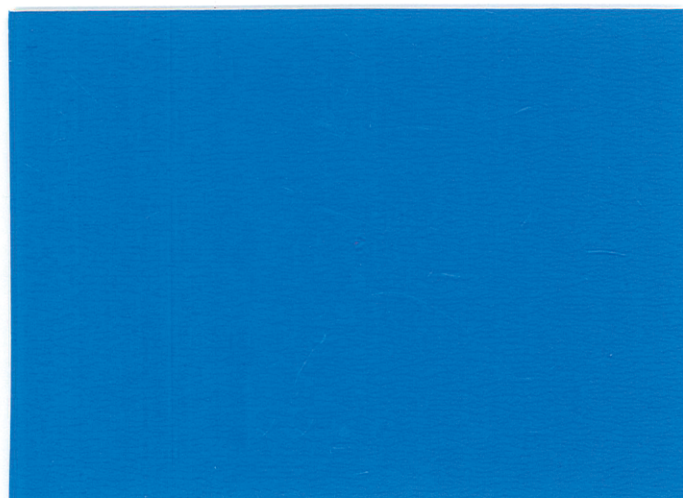
更耐磨：
如宝石般坚硬剔透、添加高强耐磨
特殊成分、使损伤、刮擦无处留痕



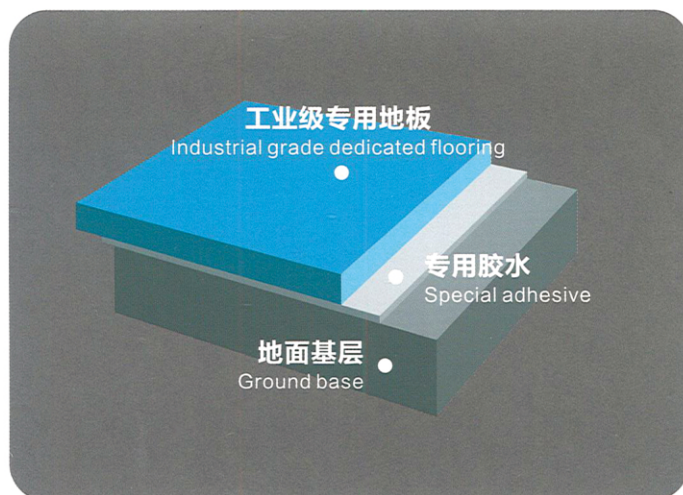
YD-1003



YD-1005

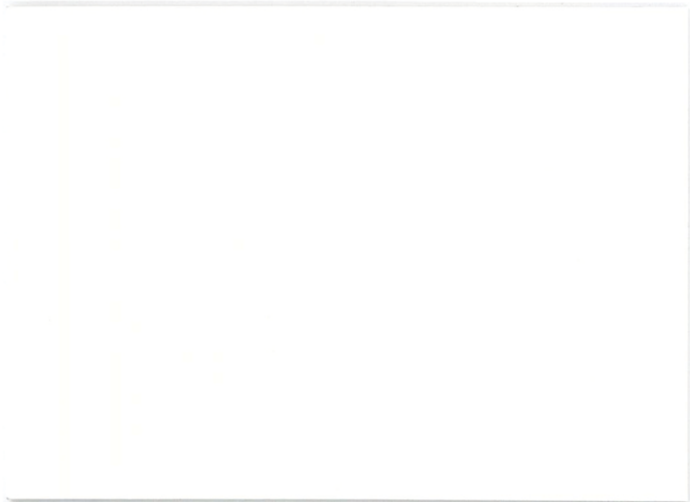


YD-1004

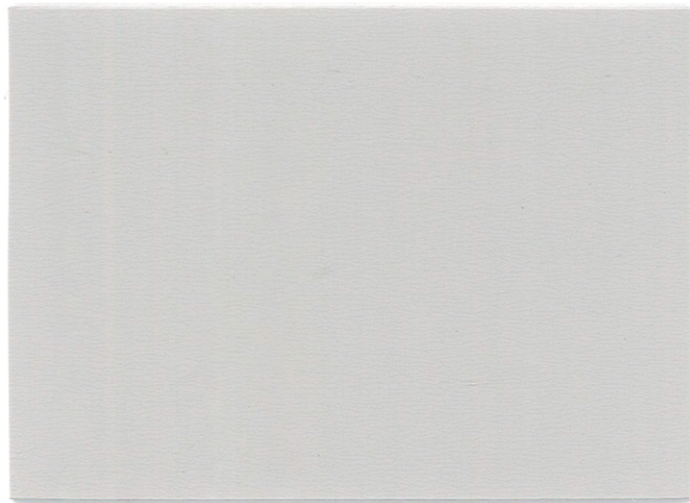




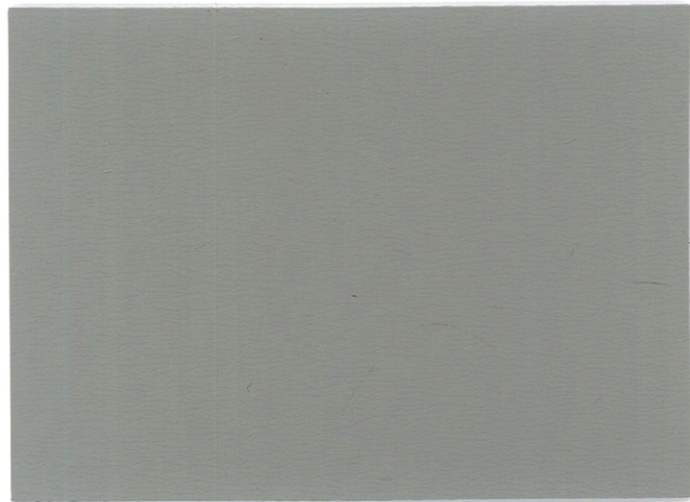
Product thickness 产品厚度	1.2/1.4/1.6mm
Wide in width 宽幅	2m
Length 长度	20m



YD-1007



YD-1002



YD-1006



伊达®
YIDA

工业级专用地板
INDUSTRIAL GRADE
DEDICATED FLOORING



Healthy & Environmental
Protection
健康环保



Overload
超重载



Antifouling
防污



Fire prevention
抗渗



Super Wear-Resisting
超耐磨



Corrosion protection
防腐蚀



Fire prevention
防火



Noise reduction
降噪

TECHNICAL PARAMETERS 技术参数表

Technical Data 产品性能	Standards 测试标准	Result 结果
Product thickness 产品厚度	EN 428	1.2/1.4/1.6 mm
Weight 重量	EN 430	1850kg/m ²
Wide in width 宽幅	EN 426	2m
length 长度	EN 426	20m
Wear resistance grade 耐磨等级	GB/T 11982	T
Water resistance 耐水性	GB/T 1733	无起泡/无脱落/无起皱
Residual depression 残余凹陷	GB/T 2411-2008	0.02mm
Friction coefficient 摩擦系数	GB/T 22374-2008	干燥状态: 0.67/潮湿状态: 0.54
Pressure resistance 耐压性	EN ISO 24343-1:2012	0.02mm
Wear resistance 耐磨耗	EN 649	0.9mg
Dimensional stability after heating 加热后尺寸稳定性	EN ISO 23999:2012	尺寸变化率: 0.14%
Pollution resistance (oil) 耐污染 (机油)	ISO 26987:2008	无影响
Washable brush 耐洗刷	GB/T 9266-2009	2.5万次, 可见磨痕未磨穿基材
Formaldehyde emission 甲醛释放量	GB/T 18580-2001	零
Xylene release 二甲苯释放量	GB 18581-2009	零
Fire rating 防火等级	GB 8624-2012	B1

广泛适用于大型工厂、车间、厂房、实验室、各类4S维修店，无尘车间、洁净车间、大型仓储中心、集散中心、博物馆、停车场、电影院、机场、车站等场所

Widely used in large factories, workshops, factories, laboratories, various 4S repair shops, dust-free workshops, clean workshops, large storage centers, distribution centers, museums, parking lots, cinemas, airports, stations, and other places

